

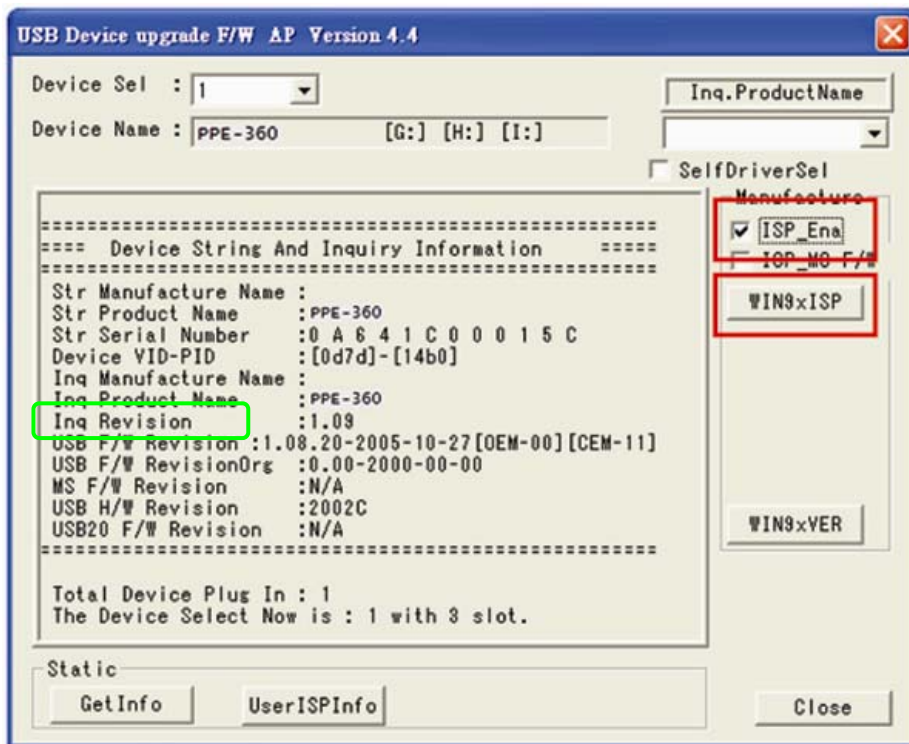
Instructions on Updating Firmware v1.0D on Picture Porter Elite

Firmware version: V1.0D

Release note: Support xD H-Type and xD M-Type 2GB memory cards

Operating OS: Windows 98, 2000 (SP3/SP4), XP and Windows Vista

1. Download "PPE-360_v1D.zip" to you computer.
2. Unzip "PPE-360_v1D.zip" and note the location of the unzipped folder.
3. Connect Picture Porter Elite to your computer.
4. Double click on "**Ps0Av44m.exe**" to run the program.
5. An Update Dialog window will pop up. Press OK.
6. The following screen will open up:
 - a. Check the "ISP_Ena" box.
 - b. Click on "WIN9xISP" button to begin the update.



7. The update will run. Once finished, press "Close" to close the program.
8. The v1.0D upgrade is completed.
9. If you'd like to confirm that the firmware is successfully completed, safely remove Picture Porter Elite from your computer and re-connect it back to your computer. Repeat Step 4-5 and confirm that under "Inq Revision" it says "1.0D".

If you need further assistance, contact Tech Support at support@digitalfoci.com.